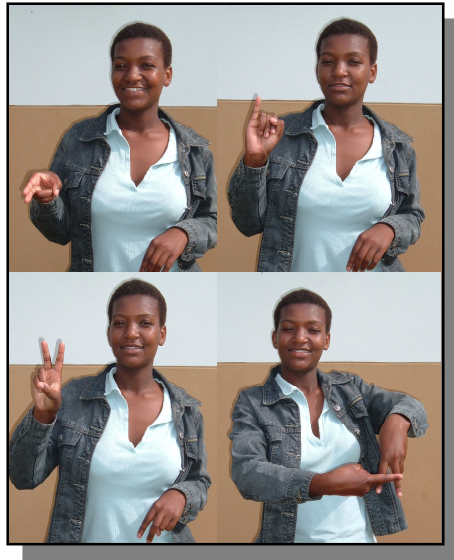


**HIV & AIDS and youth with disabilities:  
A baseline study of youth with disabilities  
living in uMgungundlovu District,  
KwaZulu Natal**



**By Paul Chappell and Nokulunga Radebe (CREATE)**

**January 2009**



© *CREATE*

*This document is copyright of CREATE. No part of it may be used or copied without permission from the authors.*